

# HOLIDAY PET HAZARDS

*Brought to you by Midwest Veterinary Supply and Pet Poison Helpline*



## **Chocolate:**

The darker the chocolate, the more dangerous it is to dogs and cats.



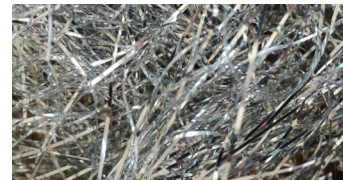
## **Plants:**

Though beautiful, some holiday plants can be deadly in small amounts.



## **Xylitol:**

Sugar free gum and candy can cause a deadly blood sugar drop in dogs.



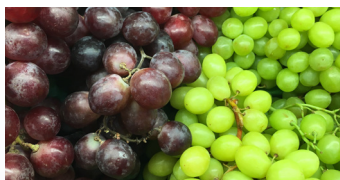
## **Tinsel:**

Though tinsel is not toxic, it can cause severe damage to a pet's intestinal tract.



## **Salt dough ornaments:**

Ingestion can cause life-threatening sodium poisoning with vomiting, diarrhea and seizures.



## **Grapes & raisins:**

Grapes and raisins can cause irreversible kidney damage in dogs. Beware of these fruits in baked holiday treats.



## **Yeast bread dough:**

When ingested, expanding dough can cause bloat while fermenting yeast leads to alcohol poisoning.



## **Macadamia nuts:**

These nuts can cause pancreatitis and neurological signs in dogs.

## **Less common, but still worrisome:**



## **Batteries:**

May result in corrosive injury to the mouth and GI tract if chewed or swallowed.



## **Hand sanitizer:**

Made of highly concentrated alcohol, even small ingestions can lead to intoxication, rapid sedation, vomiting, and shock.



## **Grandma's baggie of pills:**

Beware of this grab bag! Remind guests to keep their meds in a closed drawer and away from curious noses.